

Spanish Colonial Revival



The Spanish Colonial Revival style dates from 1915 to the present. In Los Angeles, the style dates from the late nineteen-teens, and continues in popularity today.

The Spanish Colonial Revival grew out of a renewed interest in the Spanish Missions in the Southwest and the Monterey Revival. The architectural features of this style are intended to reflect traditional Spanish architecture with local building materials, such as Adobe brick or stucco.

Spanish Colonial structures are typically one or two stories, and rectangular in floor plan. The buildings have low-pitched, tiled roofs, recessed openings, decorative ironwork and gardens.

The features of the Spanish Colonial Revival are often mixed with provincial northern Italian, Plateresque, Neo-Classical, and Moorish architecture.

Spanish Colonial Revival- Common character defining features

Windows (pg. 61)

- Rectangular
- Casement
- Fixed
- Stained or leaded glass
- Arranged singularly
- Arched or rectangular tops
- Decorative bars

Porches (pg. 69)

- Small in size
- Square posts

Doorways (pg. 66)

- Single
- Arched or rectangular
- Decorative ironwork

Roofs (pg. 73)

- Low pitched
- Tiled

Building Materials (pg. 79)

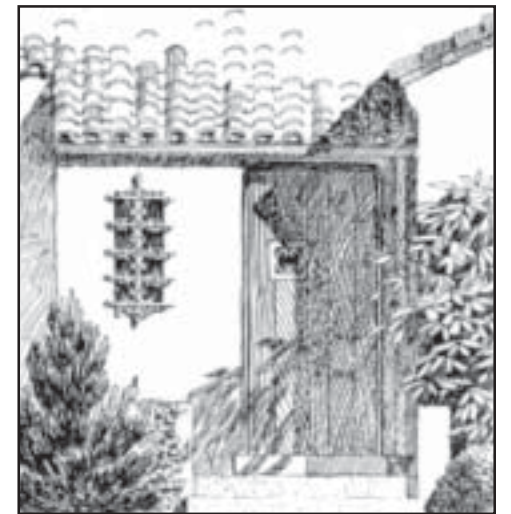
- Stucco
- Decorative ironwork

Notes on styles section:

This text may be customized to include information related to this architectural style that is unique to your HPOZ. Although you may use an alternate approach, you may wish to review the recommended five paragraph approach towards writing this section as outlined below:

- *The first paragraph contains an overview of the period of development of the style. You might want to include information about the dates such styles were popular regionally and more specifically within your HPOZ.*
- *The second paragraph contains background information about the style's development. It may include a description of the origin of the style and its relationship to other contemporary movements.*
- *The third paragraph includes information on the identifying hallmarks of the style. This is where you describe the main components of this style that differentiate it from others.*
- *You may wish to add a fourth paragraph to detail more specific examples of this style within your HPOZ, including a discussion of any prominent local architects who worked in this style. Other related information regarding your local HPOZ could be added. This paragraph will most likely be unique to your HPOZ only.*
- *The last paragraph discusses the styles with which this style is commonly found mixed. It is important to illustrate how styles are not necessarily exclusive of each other, and that elements of many different different styles may be found a single structure.*

Additional graphics:



Suggested graphics are included to help illustrate the text. They may be replaced or augmented by the graphics to the right, or you may wish to substitute local photos or other graphics illustrating buildings or styles within your HPOZ.

The chart to the left contains information to help identify buildings of this style in the community. There may be additional unique locally occurring features that characterize this style in your neighborhood which you may wish to add.