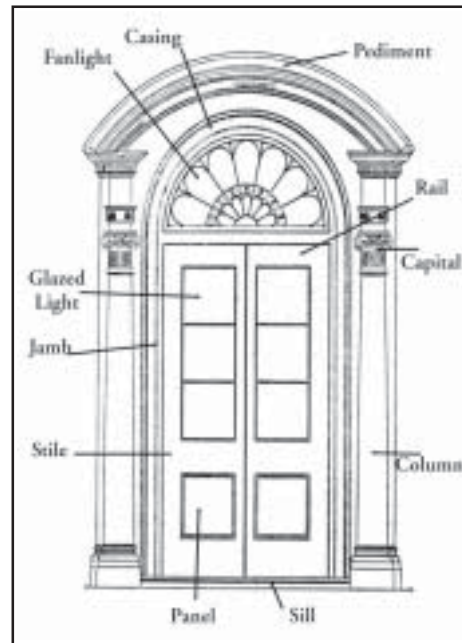


6.2.3 Doors



PURPOSE AND INTENT

The pattern and design of doors are major defining features of a structure. Changing these elements in an inappropriate manner has a strong negative impact on the historic character of the structure and the neighborhood. Doors define character through their shape, size, construction, glazing, embellishments, arrangement on the façade, hardware, detail and materials, and profile.

In many cases doors were further distinguished by the placement of surrounding sidelights, fanlights, or other architectural detailing. Preservation of these features is also important to the preservation of a house's architectural character.

GUIDELINES

- .1 Preserve the materials and design of historic doors and their surrounds.
- .2 The size, scale, and proportions of historic doors on a façade should be maintained.
- .3 Filling in or altering the size of historic doors, especially on primary facades, is inappropriate.
- .4 Adding doors to visible historic facades is inappropriate.
- .6 When replacement of doors is necessary, replacement doors should match the historic doors in size, shape, scale, glazing, materials, method of construction, and profile.
- .7 When original doors have been lost and must be replaced, designs should be based on historic photographic evidence. If no such evidence exists, the design of replacement doors should be based on a combination of physical evidence (indications in the structure of the house itself) and evidence of similar doors on houses of the same architectural style in the neighborhood.
- .8 Painting historic doors that were originally varnished or stained and are not currently painted is not appropriate.
- .9 Original hardware, including visible hinges, doorknockers, and latches or locks should not be removed. Repairing original hardware is preferable; if replacing hardware is necessary, hardware that is similar in design, materials, and scale should be used.
- .10
- .11

PRESERVATION PLAN WORKSHEET PAGE THIS SIDE WILL NOT BE PART OF FINAL DOCUMENT

Notes on text:

Include information on door types that are found in your HPOZ area in the introduction for this section. You may wish to discuss particular locally occurring door elements in more detail.

When customizing guidelines in this section, please remember that a range of guidelines are listed on these pages to foster discussion and debate regarding the key points. A full assortment of topics and issues are listed, you may wish to cross many out, and add many more. You will find that some may not apply in your HPOZ, and others may be contradictory to those that do. Guidelines that do not apply may be deleted, reversed, or rephrased. General guidelines may be developed in more detail to suit the character of your HPOZ. You may find it helpful to make a list of topics you feel are important, and then draft guidelines to address each one.

Guidelines are different than goals. They should be specific and prescribe a course of action rather than announce a desirable end goal. For help on drafting guidelines, please refer to the introduction of this section.

When customizing the guidelines, you may want to limit the HPOZ board's review to facades that are visible from the public right-of-way. The board may also be directed to be more lenient when reviewing doors on the side and rear facades with regards to materials and size.

Review these guidelines as you think about those appropriate for your HPOZ area. You may delete those that do not apply or rephrase/reverse them to meet your needs. Additional guidelines may be developed and listed here. As you think about appropriate guidelines, it may be helpful to make a separate list of areas of concern regarding work in this section, and then draft a guideline for each item. After doing so, compare your list with those to the left and remove/rephrase/delete/add as appropriate.

Make use of a hierarchy of verbs and phrases to convey the general importance of each particular guideline. The use of the words 'are encouraged', 'are strongly discouraged', 'may', 'should', 'shall', etc. indicate how strongly the HPOZ board will, and the applicant should, adhere to a particular guideline. Each guideline listed on the left is only a concept, the verbs and phrases can be modified to meet local expectations.

Additional graphics:

Photos illustrating door types that are typical in your HPOZ can also be added on this page.



6.2.3 Doors



Loss of this door and its sidelights would have a negative effect on the character of this house.



Typical entryway with screen door.

ADMINISTRATIVE PROCEDURES

EXEMPTIONS

- .1
- .2

REVIEW DELEGATED TO PLANNING STAFF

- .1 The review of all door replacement and repair shall be delegated to staff.
- .2 The review of all ordinary maintenance and repair work involving doors shall be delegated to staff.
- .3 The review of all screen or storm doors shall be delegated to staff.

GENERAL BACKGROUND AND ADVICE TO THE APPLICANT

Replacing or obscuring doors can have a serious negative effect on the character of a structure. Generally, historic doors and their surrounds should not be replaced unless they cannot be repaired or rebuilt. If doors must be replaced, the replacement doors and their surrounds should match the originals in dimension, material, configuration and detail. Because it is often difficult to find standard doors that will match historic doors in these details, replacing historic doors appropriately often requires having doors custom built or requires searching for appropriate doors at architectural salvage specialty stores.

Maintaining historic doors makes good economic sense, as they will typically last much longer than modern replacement doors. Problems with peeling paint, draftiness, sticking, and loose glazing, are all problems that are often quite easy to repair. Applying weather stripping, reputting a window, or sanding down the bottom of a door are repairs that most homeowners can accomplish on their own.

Screened doors were often historically present on many houses, and appropriately designed screened doors can still be obtained. However, installing a metal security door which blocks your door from view is inappropriate, and should be avoided.

Please refer to the Appendix for additional assistance and resources.

PRESERVATION PLAN WORKSHEET PAGE THIS SIDE WILL NOT BE PART OF FINAL DOCUMENT

Notes on text:

List specific types of door projects, if any, that would benefit from being exempt from the HPOZ review process. This section complements the Exemption section in Chapter III - Function of the Plan; it is not necessary to restate that section here.

Routine, recurring, and/or simple cases that are easily and effectively governed by the guidelines may be delegated to staff for review. This may create more time for the board to focus on significant projects and speed the review of certain limited projects. Other boards may wish to continue to review all applications. This section complements the Delegation section in Chapter III - Function of the Plan; it is not necessary to restate that section here.

Finish with any background information or advice that the reader might find useful. A reference section at the end of this document will identify other places to find preservation information.

You may wish to include general advice, recurring problems and locally unique solutions, and if desired, even explain the rationale behind a particularly controversial or complicated local preservation issue specific to your community.

There will be an opportunity to list preservation resources, contacts, and directories in the appendix. In this way they may be updated as appropriate without resubmitting the document to the City Planning Commission.

Additional graphics:



Security doors and bars disfigure this entryway.

6.2.3 Doors

ILLUSTRATIVE STYLES



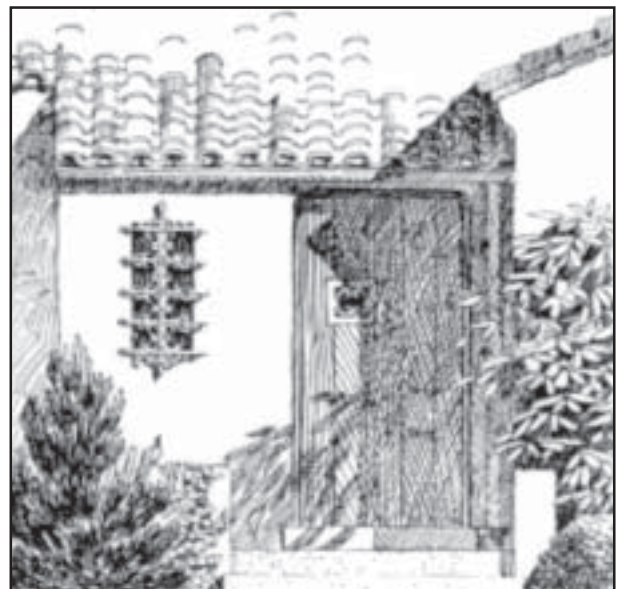
Queen Anne style entry porch



Colonial Revival entryway



English Revival French doors



Spanish Revival Doorway

PRESERVATION PLAN WORKSHEET PAGE
THIS SIDE WILL NOT BE PART OF FINAL DOCUMENT

Notes on text:

Additional graphics:

Select additional photos from this area to insert onto the styles page.